



## Make Play and Share with H5P: Memory Game

Welcome to the Interactive Content team's H5P workshop.

H5P have over 35 different content types ranging from presentations, collage, hotspots, multiple choice to interactive video to name but a few.

In this second part of the workshop, we'll introduce you to another of H5P's interactives, the memory game.

1

### Create New Content

Latest Release Note  
Content Author Tutorials  
Forum

### Recent Content

Title

Human Anatomy

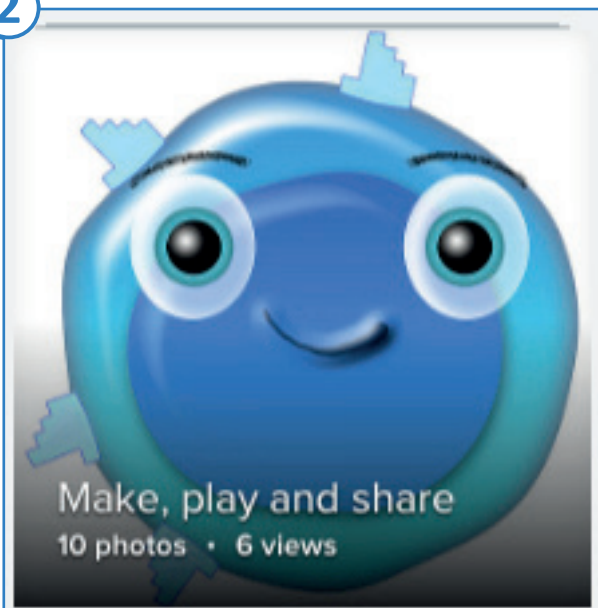
### 1. Go to your free H5P account.

Visit [www.h5p.org](http://www.h5p.org) and log in. Go to 'My account'. You should see the Image Juxtaposition 'Human Anatomy' you created earlier under 'Recent Content'.

### 2. Create New Content: Memory Game

Lets create our second piece of content. The memory game interactive is a classic pairing card game. For this to work, we shall need some images.

2



Open a new tab in your browser and visit our Flickr account <https://www.flickr.com/photos/interactive-content/albums>. Select the 'Make, play and share' from our OER Flickr library albums.

You can download them individually, and choose medium size (you need 8 and the logo) or as a zip. Keep the Flickr page open.

\*Square images work best for this interactive.

Go back over to our other tab containing H5P (continued overleaf).

3



### 3. Next steps

Click on 'Create New Content' under the 'Quick Links' section.

- i. Title: Name it 'Supercytes Memory Game'
- ii. Select Content Type: scroll down until you find 'Memory Game'
- iii. First Image: Upload one of the cell images and label it with its cell name
- iv. Select 'Edit Copyright' and copy the details from the image in Flickr  
Copyright © Donald J. Davidson, University of Edinburgh  
2017  
CC BY-NC-SA
- v. Add a description under 'Alternative text for Image'
- vi. Add the cell name in 'Description' for what you want to appear when the cards are paired
- vii Next Image: Upload image 2 and label it as that cell name
- viii. Add Cards until you have 8 in total adding the copyright each time
- ix. Tags: add the following tags 'Supercytes' 'cells'
- x. Scroll down to 'Look and feel' and select 'Card back'
- xi. Add the Supercytes logo image and add the copyright info

Hit Save. You should now have your completed interactive. Now you can play, see how quickly can you solve it! See our example <https://h5p.org/node/245943>

4



### 4. Share your creation on Twitter and embed on your website

Share your design by using the 'tweet' button at the bottom of the page. Add the following hashtag to your tweet [#LTWshowcase](https://twitter.com/hashtag/LTWshowcase)

You can also embed your new interactive directly to your website by using the '<>Embed' link at the bottom of the interactive. Just copy and paste the html into your page.